



Fore Scout

Core Extensions Module: Dashboard Plugin

Configuration Guide

Version 1.1



Contact Information

Forescout Technologies, Inc.

190 West Tasman Drive

San Jose, CA 95134 USA

<https://www.forescout.com/support/>

Toll-Free (US): 1.866.377.8771

Tel (Intl): 1.408.213.3191

Support: 1.708.237.6591

About the Documentation

- Refer to the Resources page on the Forescout website for additional technical documentation: <https://www.forescout.com/company/resources/>
- Have feedback or questions? Write to us at documentation@forescout.com

Legal Notice

© 2019 Forescout Technologies, Inc. All rights reserved. Forescout Technologies, Inc. is a Delaware corporation. A list of our trademarks and patents can be found at <https://www.forescout.com/company/legal/intellectual-property-patents-trademarks>. Other brands, products, or service names may be trademarks or service marks of their respective owners.

2019-03-03 15:56

Table of Contents

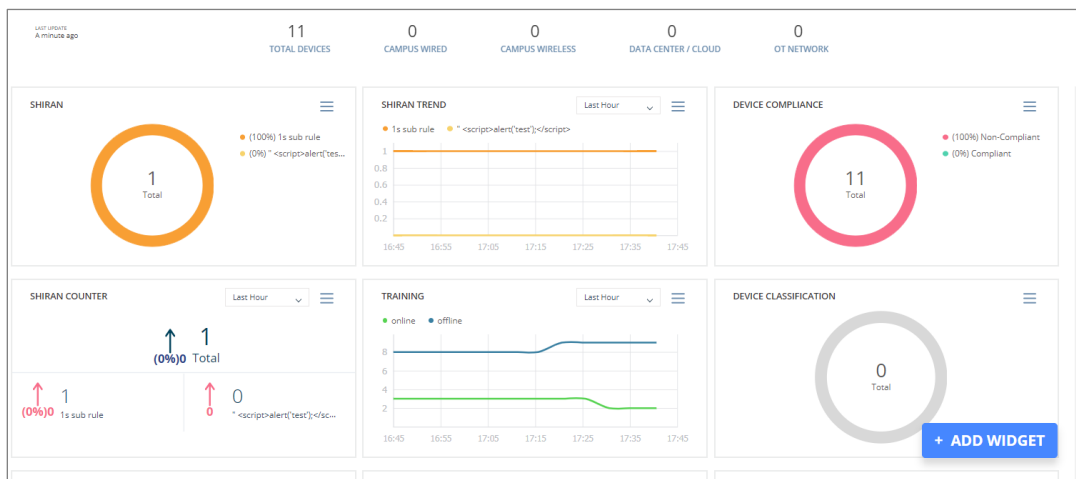
About the Dashboard Plugin	4
Core Extensions Module Information	4
Additional Forescout Documentation	5
Documentation Downloads	5
Documentation Portal	6
Forescout Help Tools.....	6

About the Dashboard Plugin

The Dashboard Plugin provides the Forescout Dashboard page.

The Dashboard is a web-based information center that provides an overview of the network and delivers dynamic at-a-glance information about:

- Device compliance
- Device classification
- Device management status



Users access the Dashboard in either one of the following ways:

- From within the Console
- From a web browser

By default, all Forescout users can access the Dashboard page. Forescout administrators have the capability to control user access to the Dashboard page, using either the Console or the command line interface.

For information about the Dashboard page, refer to the *Forescout Administration Guide*. See [Additional Forescout Documentation](#) for information on how to access the guide.

Core Extensions Module Information

The Dashboard Plugin is installed with the Forescout Core Extensions Module.

The Forescout Core Extensions Module provides an extensive range of capabilities that enhance the core Forescout solution. These capabilities enhance detection, classification, reporting, troubleshooting and more. The following components are installed with the Core Extensions Module:

Advanced Tools Plugin

CEF Plugin

Dashboard Plugin

DHCP Classifier Plugin

DNS Client Plugin

DNS Enforce Plugin

DNS Query Extension Plugin	Device Classification Engine	External Classifier Plugin
Flow Analyzer Plugin	Flow Collector	IOC Scanner Plugin
IoT Posture Assessment Engine	NBT Scanner Plugin	Packet Engine
Reports Plugin	Syslog Plugin	Technical Support Plugin
Web Client Plugin		

The Core Extensions Module is a Forescout Base Module. Base Modules are delivered with each Forescout release. This module is automatically installed when you upgrade the Forescout version or perform a clean installation.

Additional Forescout Documentation

For information about other Forescout features and modules, refer to the following resources:

- [Documentation Downloads](#)
- [Documentation Portal](#)
- [Forescout Help Tools](#)

Documentation Downloads

Documentation downloads can be accessed from the [Forescout Resources Page](#), or one of two Forescout portals, depending on which licensing mode your deployment is using.

- **Per-Appliance Licensing Mode** – [Product Updates Portal](#)
- **Flexx Licensing Mode** – [Customer Portal](#)

 *Software downloads are also available from these portals.*

To identify your licensing mode:

- From the Console, select **Help > About Forescout**.

Forescout Resources Page

The Forescout Resources Page provides links to the full range of technical documentation.

To access the Forescout Resources Page:

- Go to <https://www.Forescout.com/company/resources/>, select **Technical Documentation** and search for documents.

Product Updates Portal

The Product Updates Portal provides links to Forescout version releases, Base and Content Modules, and eyeExtend products, as well as related documentation. The portal also provides a variety of additional documentation.

To access the Product Updates Portal:

- Go to <https://updates.forescout.com/support/index.php?url=counteract> and select the version you want to discover.

Customer Portal


The Downloads page on the Forescout Customer Portal provides links to purchased Forescout version releases, Base and Content Modules, and eyeExtend products, as well as related documentation. Software and related documentation will only appear on the Downloads page if you have a license entitlement for the software.

To access documentation on the Forescout Customer Portal:

- Go to <https://Forescout.force.com/support/> and select **Downloads**.

Documentation Portal

The Forescout Documentation Portal is a searchable, web-based library containing information about Forescout tools, features, functionality, and integrations.

 *If your deployment is using Flexx Licensing Mode, you may not have received credentials to access this portal.*

To access the Documentation Portal:

- Go to https://updates.forescout.com/support/files/counteract/docs_portal/ and use your customer support credentials to log in.

Forescout Help Tools

Access information directly from the Console.

Console Help Buttons

Use context sensitive *Help* buttons to quickly access information about the tasks and topics you are working with.

Forescout Administration Guide

- Select **Forescout Help** from the **Help** menu.

Plugin Help Files

- After the plugin is installed, select **Tools** > **Options** > **Modules**, select the plugin and then select **Help**.

Online Documentation

- Select **Online Documentation** from the **Help** menu to access either the [Forescout Resources Page](#) (Flexx licensing) or the [Documentation Portal](#) (Per-Appliance licensing).