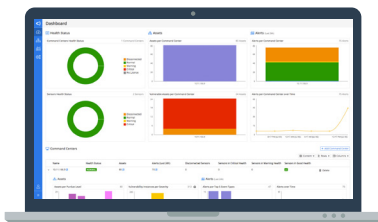


**Enterprise Command Center (ECC)**

# ICS Network Visibility and Cybersecurity for Multi-Site Enterprise Deployments

Complete visibility and control for multi-network IT-OT deployment scenarios



## The Challenge

There will be 900 million new connected devices this year, with the majority of growth occurring outside of conventional IT. 85% of device growth will occur in the IoT and OT domain<sup>1</sup> resulting in a widening visibility gap between IT and OT cybersecurity stakeholders and their network. Cybersecurity stakeholders with extensive, geo-distributed industrial networks are now forced to reconcile this visibility gap that has resulted from the IT-OT convergence trend. Security Operation Center (SOC) managers and CISOs alike need new ways to support and manage their growing network.

By 2023, the financial impact of cyber-physical system attacks as a result of fatal casualties will reach over

# 50 BILLION

# 10

times higher than 2013 levels of data security breaches.<sup>1</sup>

— Gartner

## The eyeInspect (formerly SilentDefense) Enterprise Command Center

- Displays key operational status of multi-site OT and ICS networks on a single pane of glass
- Enables cross-site investigation of threats and vulnerabilities for informed remediation action.
- Reduces the mean time to respond (MTTR) through real-time awareness and contextual information.
- Maximizes productivity by allowing asset owners to easily switch operational oversight between regions, sites, networks and even device end-points.
- Supports enterprise growth initiatives with a scalable and flexible deployment model.

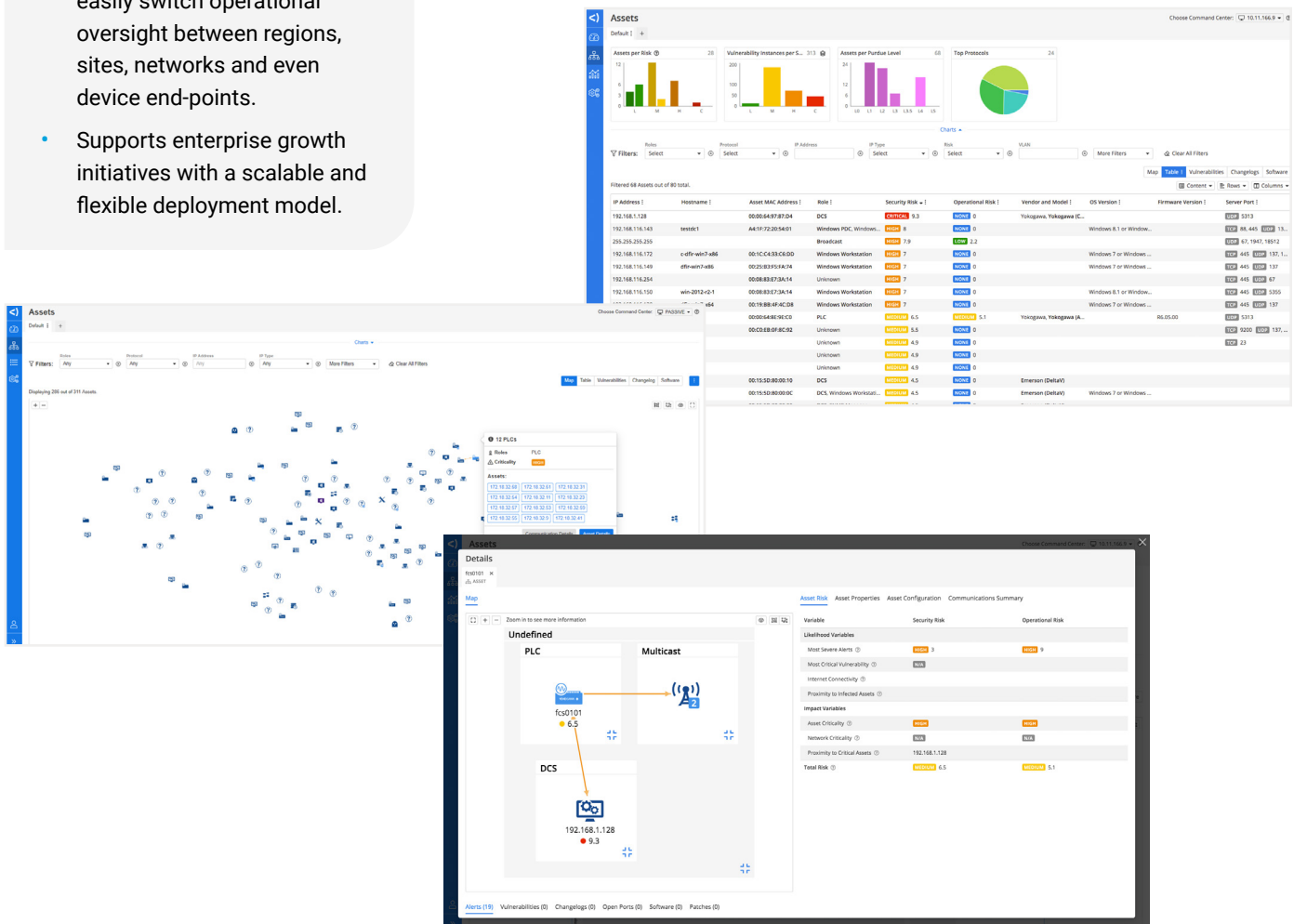
## Enterprise Command Center: Scalable Visibility

The Enterprise Command Center (ECC) enables both IT and OT cybersecurity stakeholders to achieve both local and global control of their eyeInspect installations on a single pane of glass. It allows CISOs and SOC managers alike to rapidly identify and remediate operational and cyber threats in real time. The innovative user interface is designed to present operating status and alerts in various dynamic dashboard views ideal for daily operations management tasks. The ECC provides a high-level view of the status of the entire OT infrastructure and facilitates deployments in large, complex organizations with multiple chains of responsibility for the management of security information.

## ECC Use Cases

### Global Asset Inventory and Compliance Monitoring

Rapid visualization from regions to devices supports continuous compliance and risk monitoring through real-time control of changes, vulnerabilities and configuration. With the ECC, you have global control of the maintenance status of your assets and access to contextual data for security and compliance teams.



Single pane of glass visualization of your distributed OT network, vulnerabilities and device operating status

## Seamless Event Navigation

Cross-site investigation lets users compare behaviors of different regions from a single location, allowing the user to increase productivity of network monitoring and incident handling via easy context switch between regions. This added context decreases the mean time to respond (MTTR) through real-time awareness and contextual information.

[illegible][illegible]

## Centralized reporting of main threats, alerts and vulnerabilities

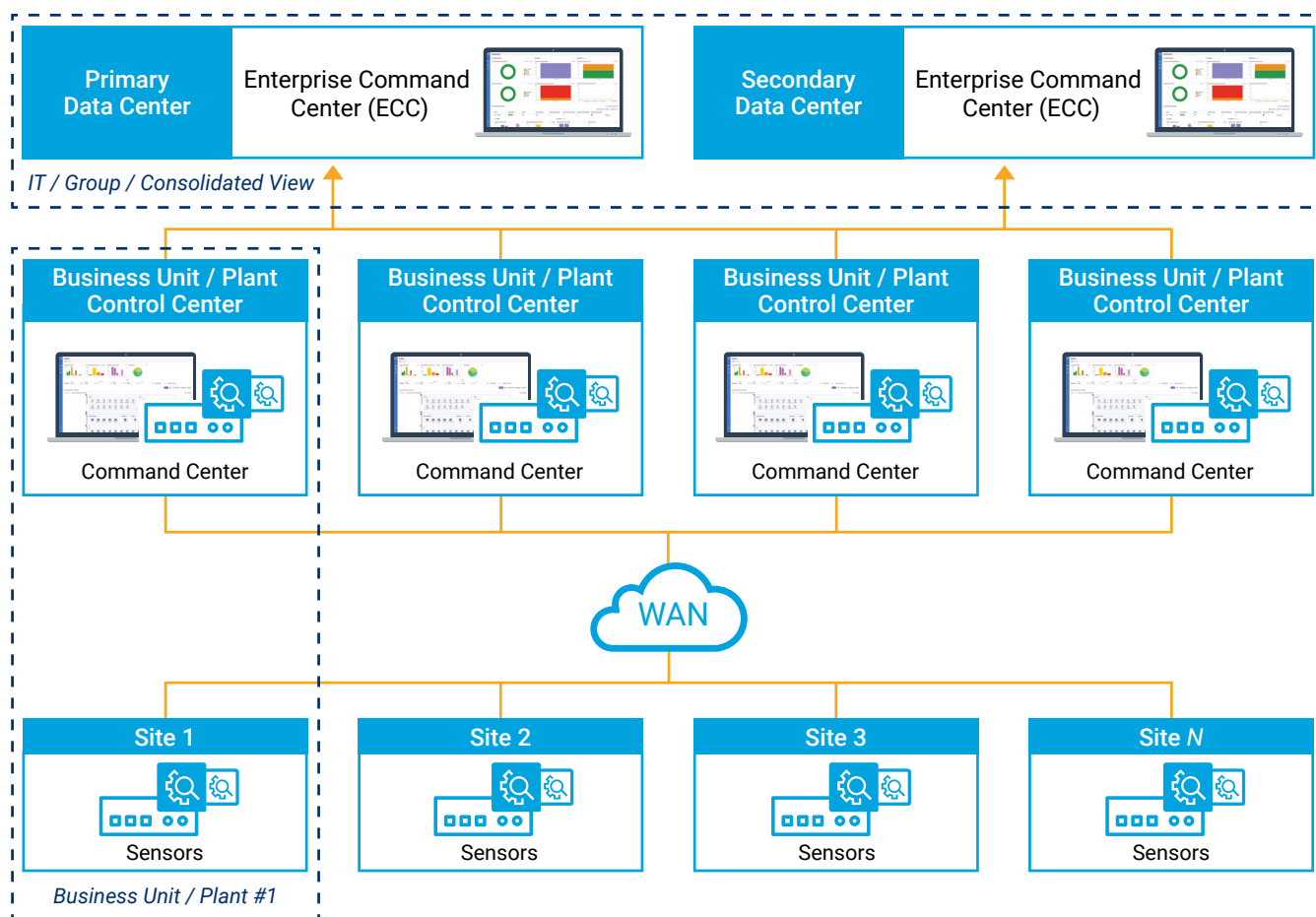
## Site-by-Site Expansion

The ECC is both scalable and flexible, allowing organizations to rapidly deploy within greenfield and brownfield sites. Users can easily duplicate and enforce operational best practices as well as custom dashboard and queries to support the most aggressive of site expansion endeavors.

The ECC is both scalable and flexible, allowing organizations to rapidly deploy within greenfield and brownfield sites.

## Easier Network Deployments for Large, Complex Organizations

Both IT and OT cybersecurity stakeholders can customize operational functions and actions throughout the organization for streamlined management of information over multisite, geo-distributed deployments, resulting in better communication between executive leaders and those in the field.



*Enterprise-level scalability for the largest organizations in the world*

## Benefits of the ECC Include:

- Rapidly scale across multiple, geo-distributed network sites for global oversight
- Engage in cross-site investigation to compare behaviors of different regions from a single location
- Reduce the mean time to respond (MTTR) through real-time awareness and contextual information
- Easily switch between regions, networks and sites to increase productivity
- Achieve a better understanding of threats due to contextual analysis
- Reduce downtime, revenue loss, and degradation of brand due to cyber incidents

## Experience the Enterprise Command Center for yourself

**SCHEDULE A DEMO**

<sup>1</sup> When OT Is Short for Overlooked Technology and Ransomware Becomes Siegeware, Wam Voster, Gartner, 2020, <https://www.gartner.com/en/documents/3985226/when-ot-is-short-for-overlooked-technology-and-ransomware>