

Forescout OT Network Security Monitoring App for Splunk

Respond and mitigate OT threats faster and more effectively

To prevent operational disruptions, operational technology (OT) asset owners need to know what devices are on their networks and monitor them to detect threats in real time. The Forescout OT Network Security Monitoring App for Splunk streamlines threat detection and response workflows for faster and more effective risk mitigation.

Challenges

Industrial organizations are under pressure to secure and monitor their growing OT and industrial control system (ICS) networks with fewer resources. To accomplish this, asset owners require cohesive visibility into devices and network operations in a manageable, digestible way. Currently, attaining this type of information requires multiple tools and resources. Common challenges include:

- Slow and incomplete threat/incident response times
- Inefficient implementation and enforcement of compliance tasks
- Complex integrations with SIEMs and other enterprise tools
- Limited budget and staff to implement required IT-OT security strategies
- Elevated risk of downtime of critical business operations

79%

of organizations with a SCADA/ICS network have suffered a breach in the past 24 months¹

— Forrester

Customer Benefits

- Enable accurate detection and prioritization of OT threats for remediation with Splunk
- Gain real-time, intelligent alerting with highly configurable Splunk messages leveraging information gathered from eyeInspect (formerly SilentDefense)
- Reduce MTTR to cyber and operational threats by providing device-specific, contextual asset information
- Identify recent changes in the network and asset configuration

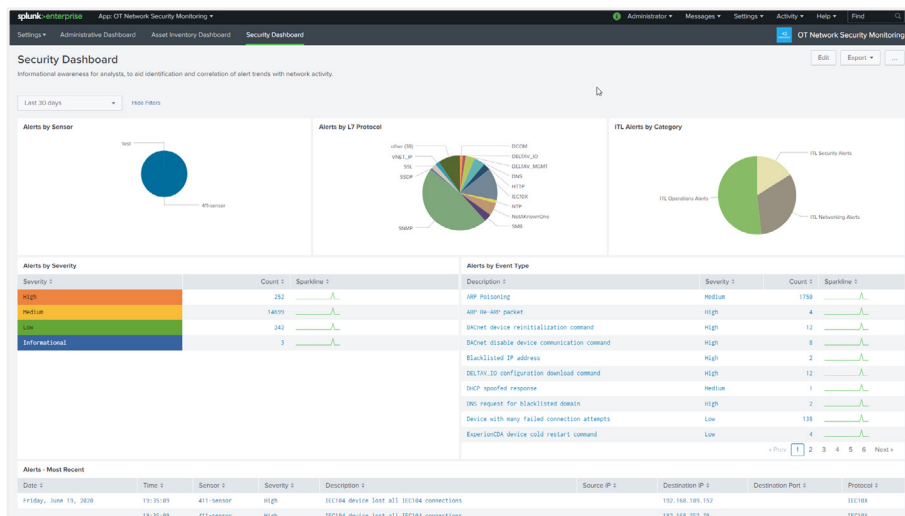
The Forescout Solution

The Forescout OT Network Security Monitoring App for Splunk enables asset owners to act on OT threats and vulnerabilities with more accurate and contextual information. Data from Forescout eyeInspect is directly available in pre-built dashboards for Splunk Enterprise Security allowing asset owners to address OT threats in timely, flexible ways. Powerful and configurable widgets included in the App streamline threat detection, simplify threat analysis and reduce mean time to response (MTTR) to threats across the OT network.

Splunk users are provided unparalleled contextual information required to secure every ICS environment by means of three dedicated dashboards. Here are summaries of the dashboards within the Splunk Enterprise Security solution.

Integrating OT-specific threat indicators into Splunk

The Security Dashboard helps users identify alert trends and correlate them with other network activities to enable device compliance enforcement as well as anomaly and threat detection. This valuable context helps reduce threat and incident response times.



Alert prioritization according to business impact

Through the combination of detailed OT asset inventory information and critical operational and security alert data, the solution facilitates the prioritization of risks and vulnerabilities according to urgency and risk level. Analysts and asset owners now have granular threat intelligence behind each alert on a single dashboard, driving faster and more informed remediation action.

The Asset Inventory Dashboard provides a detailed view of OT assets. It includes a table with the following columns:

Time in Past (hh:mm:ss)	IP	MAC Address(es)	Vendor/Model	Firmware	Hardware	Serial	Labels	OS Version	First Seen
17:57:06	192.168.171.61	00-01-02-aa-08-46	SEL (31-5)	SEL-301-0-0516-11-2100105-020170818	-	-	-	-	2020-09-18T10:19:34.000+02:00
17:57:06	192.168.82.168	00-01-02-aa-08-45	SEL	-	-	-	positionFloor1	-	2020-09-18T10:19:35.000+02:00
17:57:06	192.168.81.189	00-01-02-aa-08-16	SEL	-	-	-	-	-	2020-09-18T10:19:35.000+02:00
17:57:06	192.168.217.268	00-01-02-aa-08-14	Rockwell	-	-	123-456-7890	-	-	2020-09-18T10:19:36.000+02:00
17:57:06	192.168.4.31	00-01-02-aa-08-12	ABB (AC 800P PM801)	5.0.2004.52	-	-	mrg_network_area01 mrg_network_path01 mrg_network011	-	2020-09-18T10:19:36.000+02:00
17:57:06	192.168.102.155	00-01-02-aa-08-18	-	-	-	-	-	-	2020-09-18T10:19:36.000+02:00
17:57:06	192.168.201.15	00-01-02-aa-08-05	-	-	-	-	-	-	2020-09-18T10:19:36.000+02:00
17:57:06	192.168.84.179	00-01-02-aa-08-27	-	-	-	-	-	-	2020-09-18T10:19:36.000+02:00
17:57:06	192.168.181.188	00-01-02-aa-08-33	-	-	-	-	-	-	2020-09-18T10:19:36.000+02:00
17:57:06	192.168.43.41	00-01-02-aa-08-37	-	-	-	-	-	-	2020-09-18T10:19:36.000+02:00
17:57:06	192.168.195.128	00-01-02-aa-08-57	-	-	-	-	-	-	2020-09-18T10:19:36.000+02:00
17:57:06	192.168.49.69	00-01-02-aa-08-29	-	-	-	-	-	-	2020-09-18T10:19:36.000+02:00
17:57:06	192.168.11.154	00-01-02-aa-08-09	-	-	-	-	-	-	2020-09-18T10:19:36.000+02:00
17:57:06	192.168.157.74	00-01-02-aa-08-38	-	-	-	-	-	-	2020-09-18T10:19:36.000+02:00

Assets (with Modules) - Added to Inventory

Time in Past (hh:mm:ss)	IP	MAC Address(es)	Vendor/Model	Firmware	Hardware	Serial	Labels	OS Version	First Seen	Modules
17:57:06	192.168.13.38	00-01-02-aa-08-08	ABB (AC 800P PM801)	5.0.2004.52	-	-	mrg_network_area01 mrg_network_path01 mrg_network011	2020-09-18T10:19:32.000+02:00	2020-09-18T10:19:32.000+02:00	["list_number": "0", "name": "", "type": "CPU unit", "vendor": "ABB", "model": "PM801 C", "serial_number": "", "firmware_version": "5.0.2004.52", "hardware_version": "", "label": ["", "mrg_network011"]]

Valuable OT Asset Insight

The Asset Inventory Dashboard lets asset owners and analysts access high-value device information to enhance detection of unexpected changes in the network. With this feature, you can rapidly prioritize investigations and acknowledge new assets, communication patterns and protocols within the network.

Administrative Dashboard									
Informational overview for administrators, providing insights on user activity, as well as Sensor and Command Center health status changes.									
<div> <div>Last 30 days</div> <div>View Filters</div> </div>									
Failed Logins					Connect/Disconnect Changes				
Date	Time	User IP	Username	Reason	Date	Time	Sensor	Current Status	Previous Status
Thursday, June 18, 2020	17:11:21	10.11.105.20	admin	Small password	Friday, June 19, 2020	18:17:36	411-sensor	NORMAL	WARNING
						18:17:10	411-sensor	WARNING	NORMAL
					Thursday, June 18, 2020	17:10:40	test	NORMAL	WARNING
						17:10:15	test	CRITICAL	NORMAL
User Activity					Health Changes				
Date	Time	Client IP	User	Resource	Action	Date	Time	Sensor	Health Area
Friday, June 19, 2020	17:56:07	10.11.105.20	admin	System	Logout	Friday, June 19, 2020	18:18:02	411-sensor	throughput
	17:32:46	10.11.105.20	admin	Sensor 411-sensor (idp13) - threat library	Start		18:17:26	411-sensor	sensor connection
	17:32:45	10.11.105.20	admin	Sensor 411-sensor (idp13) - threat library	Start		18:17:17	411-sensor	throughput
	17:32:45	10.11.105.20	admin	Sensor 411-sensor (idp13) - Analytic Feeder	Start		18:17:10	411-sensor	sensor connection
	17:32:45	10.11.105.20	admin	Sensor 411-sensor (idp13) - FEA module	Start		18:30:18	Command Center	OTP service
	17:32:45	10.11.105.20	admin	Sensor 411-sensor (idp13) - Parsing module	Start		18:30:18	Command Center	license
	17:32:45	10.11.105.20	admin	Sensor 411-sensor (idp13) - HMT module	Start	Thursday, June 18, 2020	17:10:40	test	sensor connection
	17:32:45	10.11.105.20	admin	Sensor 411-sensor (idp13) - Portscan module	Start		17:10:15	test	sensor connection
	17:32:41	10.11.105.20	admin	Profile 99 UDP communications	Edit				
	17:32:26	10.11.105.20	admin	Profile 99 TCP communications	Edit				

Manage Your OT Security Appliances at a Glance

The Administrative Dashboard provides deep, real-time insights into your OT security system health status and user activity performed on your eyeInspect appliances. This helps to prevent system failure and detect undesired user activity to maintain continuous security protection.

Why Forescout:

The Forescout OT Network Security Monitoring App for Splunk is the only App to consider for Industrial users of Splunk who require richer OT asset intelligence and threat detection capabilities.

Additional Resources

Learn more about Forescout eyeInspect:
www.forescout.com/platform/eyeInspect/

Download the Forescout OT Network Security Monitoring App for Splunk:
splunkbase.splunk.com/app/5169/

Learn more about our partnership with Splunk:
www.forescout.com/splunk

1 Forrester Research 2018 – “Protecting Industrial Control Systems And Critical Infrastructure From Attack”



Forescout Technologies, Inc.
 190 W Tasman Dr.
 San Jose, CA 95134 USA

Toll-Free (US) 1-866-377-8771
 Tel (Int'l) +1-408-213-3191
 Support +1-708-237-6591

Learn more at Forescout.com

© 2020 Forescout Technologies, Inc. All rights reserved. Forescout Technologies, Inc. is a Delaware corporation. A list of our trademarks and patents can be found at www.forescout.com/company/legal/intellectual-property-patents-trademarks. Other brands, products, or service names may be trademarks or service marks of their respective owners. Version 08_20