



Fore Scout

IoT Posture Assessment Library

Configuration Guide

Version 19.0.12



Contact Information

Forescout Technologies, Inc.

190 West Tasman Drive

San Jose, CA 95134 USA

<https://www.Forescout.com/support/>

Toll-Free (US): 1.866.377.8771

Tel (Intl): 1.408.213.3191

Support: 1.708.237.6591

About the Documentation

- Refer to the Technical Documentation page on the Forescout website for additional documentation: <https://www.Forescout.com/company/technical-documentation/>
- Have feedback or questions? Write to us at documentation@forescout.com

Legal Notice

© 2020 Forescout Technologies, Inc. All rights reserved. Forescout Technologies, Inc. is a Delaware corporation. A list of our trademarks and patents can be found at <https://www.Forescout.com/company/legal/intellectual-property-patents-trademarks>. Other brands, products, or service names may be trademarks or service marks of their respective owners.

2020-02-27 16:52


Table of Contents

- About the IoT Posture Assessment Library 4**
- How It Works 4**
- Display the Commonly Used Credentials 5**
- Forescout Requirements 5**
- Install the Module 6**
- Configure the Module 6**
- Additional Forescout Documentation..... 7**
 - Documentation Downloads7
 - Documentation Portal8
 - Forescout Help Tools.....8

About the IoT Posture Assessment Library

The Forescout IoT Posture Assessment Library is a Content Module that delivers a library of pre-defined login credentials that are used by the IoT Posture Assessment Engine to aid in determining the security risk of devices. These include:

- Factory default credentials for various devices, such as select IP cameras, routers, switches, and printers.
- Commonly used credentials obtained from various sources on the Internet and known to be used by hackers and malware.

 *Some credentials that have been used in known attacks may contain offensive terms.*

Each login credential includes the following fields:

- *Username* and *Password* for devices communicating over Telnet and SSH
- *Community String* for devices communicating over SNMP

The Forescout IoT Posture Assessment Engine uses these credentials to resolve the *Credential Vulnerability* property for factory default credentials and for commonly used credentials.

The library content is upgraded periodically:

- to increase the breadth of the devices for which factory default credentials are known
- to update the list of commonly used credentials

It is recommended to install the latest version of the IoT Posture Assessment Library so that the most current credential vulnerabilities are assessed.

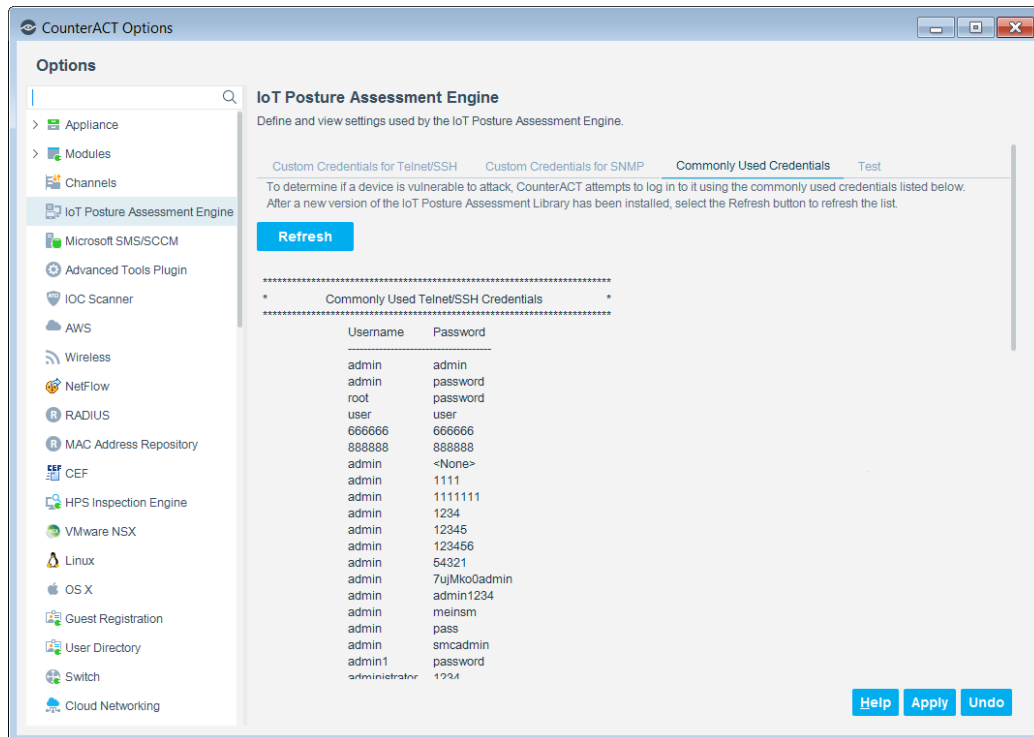
How It Works

The IoT Posture Assessment Engine provides a *Credential Vulnerability* property that attempts to log in to each connected device. The property uses the factory default credentials and the commonly used credentials provided by the IoT Posture Assessment Library. Refer to the *Forescout IoT Posture Assessment Engine Configuration Guide*. See [Additional Forescout Documentation](#) for information about how to access the guide.

Display the Commonly Used Credentials

To view the commonly used credentials contained in the library:

1. Select **Options** from the Console **Tools** menu, and select **IoT Posture Assessment Engine**.
2. Select the **Commonly Used Credentials** tab. A list of common credentials is displayed for:
 - Telnet/SSH Credentials: Username and Password
 - SNMP Credentials: Community String



3. To refresh the display after a new version of the IoT Posture Assessment Library was installed, select the **Refresh** button. The updated list is displayed.

Forescout Requirements

This module requires the following Forescout components:

- CounterACT version 8.0 or above
- Core Extensions Module version 1.0 or above, including the IoT Posture Assessment Engine

Install the Module


The IoT Posture Assessment Library is included in the Forescout platform installation. It is recommended to install the latest available version of the module so that the most current credential vulnerabilities are assessed.


To install the module:

1. Navigate to one of the following Forescout download portals, depending on the licensing mode your deployment is using:
 - [Product Updates Portal](#) - **Per-Appliance Licensing Mode**
 - [Customer Portal, Downloads Page](#) - **Flexx Licensing Mode**


To identify your licensing mode, select **Help > About ForeScout** from the Console.

2. Download the module `.fpi` file.
3. Save the file to the machine where the Console is installed.
4. Log into the Console and select **Options** from the **Tools** menu.
5. Select **Modules**. The Modules pane opens.
6. Select **Install**. The Open dialog box opens.
7. Browse to and select the saved module `.fpi` file.
8. Select **Install**. The Installation screen opens.
9. Select **I agree to the License Agreement** to confirm that you have read and agree to the terms of the License Agreement and select **Install**. The installation cannot proceed unless you agree to the license agreement.

 *The installation begins immediately after selecting Install and cannot be interrupted or canceled.*

 *In modules that contain more than one component, the installation proceeds automatically one component at a time.*

10. When the installation completes, select **Close** to close the window. The installed module is displayed in the Modules pane.

 *Some components are not automatically started following installation.*

Configure the Module

This module does not require any configuration.

Additional Forescout Documentation

For information about other Forescout features and modules, refer to the following resources:

- [Documentation Downloads](#)
- [Documentation Portal](#)
- [Forescout Help Tools](#)

Documentation Downloads

Documentation downloads can be accessed from the [Forescout Technical Documentation Page](#), and one of two Forescout portals, depending on which licensing mode your deployment is using.

- **Per-Appliance Licensing Mode** – [Product Updates Portal](#)
- **Flexx Licensing Mode** – [Customer Support Portal](#)

 Software downloads are also available from these portals.

To identify your licensing mode:

- From the Console, select **Help > About Forescout**.

Forescout Technical Documentation Page

The Forescout Technical Documentation Page provides access to a searchable, web-based [Documentation Portal](#) as well as PDF links to the full range of technical documentation.

To access the Technical Documentation Page:

- Go to <https://www.Forescout.com/company/technical-documentation/>

Product Updates Portal

The Product Updates Portal provides links to Forescout version releases, Base and Content Modules, and eyeExtend products, as well as related documentation. The portal also provides a variety of additional documentation.

To access the Product Updates Portal:

- Go to <https://updates.forescout.com/support/index.php?url=counteract> and select the version you want to discover.

Customer Support Portal

The Downloads page on the Forescout Customer Support Portal provides links to purchased Forescout version releases, Base and Content Modules, and eyeExtend products, as well as related documentation. Software and related documentation will only appear on the Downloads page if you have a license entitlement for the software.

To access documentation on the Customer Support Portal:

- Go to <https://Forescout.force.com/support/> and select **Downloads**.

Documentation Portal

The Forescout Documentation Portal is a searchable, web-based library containing information about Forescout tools, features, functionality, and integrations.

To access the Documentation Portal:

- Go to https://updates.forescout.com/support/files/counteract/docs_portal/

Forescout Help Tools

Access information directly from the Console.

Console Help Buttons

Use context sensitive *Help* buttons to quickly access information about the tasks and topics you are working with.

Forescout Administration Guide

- Select **Administration Guide** from the **Help** menu.

Plugin Help Files

- After the plugin is installed, select **Tools > Options > Modules**, select the plugin and then select **Help**.

Documentation Portal

- Select **Documentation Portal** from the **Help** menu to access the [Documentation Portal](#).