



Fore Scout

Core Extensions Module: Dashboards Plugin

Configuration Guide

Version 1.2.2



Contact Information

Forescout Technologies, Inc.

190 West Tasman Drive

San Jose, CA 95134 USA

<https://www.Forescout.com/support/>

Toll-Free (US): 1.866.377.8771

Tel (Intl): 1.408.213.3191

Support: 1.708.237.6591

About the Documentation

- Refer to the Technical Documentation page on the Forescout website for additional documentation: <https://www.Forescout.com/company/technical-documentation/>
- Have feedback or questions? Write to us at documentation@forescout.com

Legal Notice

© 2020 Forescout Technologies, Inc. All rights reserved. Forescout Technologies, Inc. is a Delaware corporation. A list of our trademarks and patents can be found at <https://www.Forescout.com/company/legal/intellectual-property-patents-trademarks>. Other brands, products, or service names may be trademarks or service marks of their respective owners.

2020-07-08 14:11

Table of Contents

- About the Dashboards Plugin 4**
 - Dashboards View.....4
 - Assets View5

- Core Extensions Module Information 5**

- Additional Forescout Documentation..... 6**
 - Documentation Downloads6
 - Documentation Portal7
 - Forescout Help Tools.....7

About the Dashboards Plugin

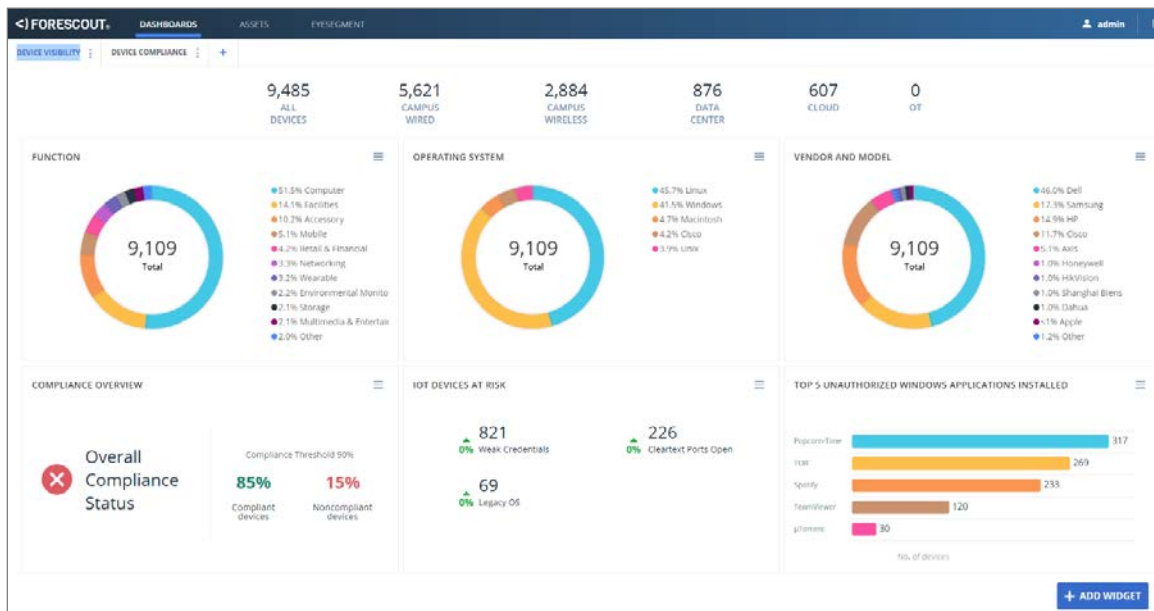
The Dashboards Plugin is a component of the Forescout Core Extensions Module. See [Core Extensions Module Information](#) for details about the module.

This plugin provides the Forescout [Dashboards View](#) and [Assets View](#). These web-based tools are part of the Forescout Web Client, which is delivered via the Web Client Plugin, also part of the Core Extensions Module.

Dashboards View

The Dashboards view, part of the Forescout Web Client, is a web-based information center that provides a real-time overview of the network through both out-of-the-box (OOTB) and user-created dashboard widgets. Dashboards deliver dynamic, at-a-glance information about:

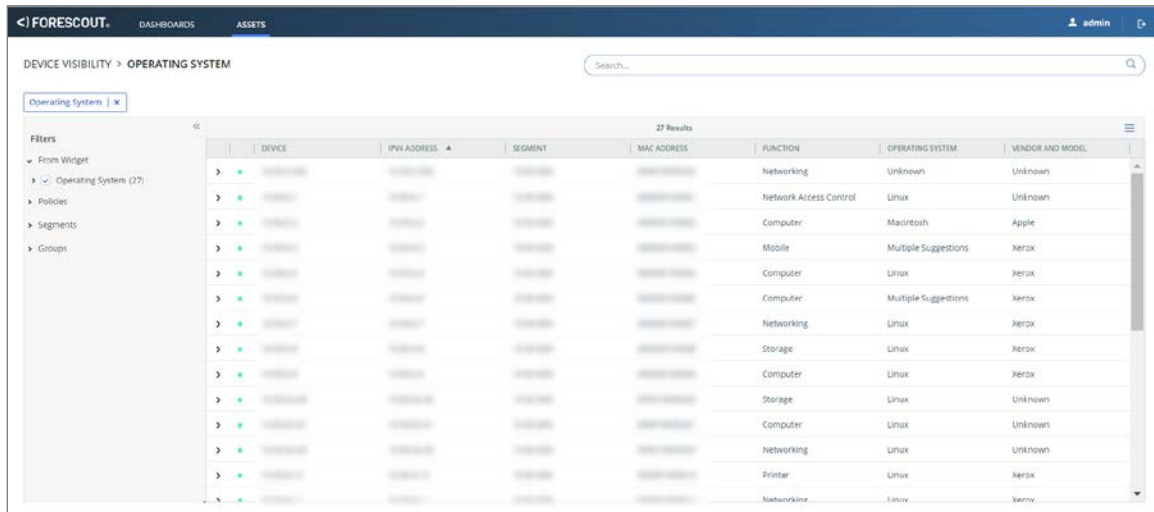
- Device visibility (OOTB)
- Device compliance (OOTB)
- Health monitoring (OOTB)
- Forescout policy data, including custom policies



For information about how to work with the Dashboards view, refer to the relevant chapter in the *Forescout Administration Guide*. See [Additional Forescout Documentation](#) for information on how to access the guide.

Assets View

The Assets view, part of the Forescout Web Client, is a web-based search, filter and discovery tool that lets you leverage extensive network and device information collected and correlated by Forescout products.



For information about how to work with the Assets view, refer to the relevant chapter in the *Forescout Administration Guide*. See [Additional Forescout Documentation](#) for information on how to access the guide.

Core Extensions Module Information

The Dashboard Plugin is installed with the Forescout Core Extensions Module.

The Forescout Core Extensions Module provides an extensive range of capabilities that enhance the core Forescout solution. These capabilities enhance detection, classification, reporting, troubleshooting, and more. The following components are installed with the Core Extensions Module:

Advanced Tools Plugin	Device Data Publisher	IoT Posture Assessment Engine
CEF Plugin	DNS Client Plugin	
Cloud Uploader	DNS Enforce Plugin	NBT Scanner Plugin
DHCP Classifier Plugin	DNS Query Extension Plugin	Packet Engine
Dashboards Plugin	External Classifier Plugin	Reports Plugin
Data Publisher	Flow Analyzer Plugin	Syslog Plugin
Data Receiver	Flow Collector	Technical Support Plugin
Device Classification Engine	IOC Scanner Plugin	Web Client Plugin

The Core Extensions Module is a Forescout Base Module. Base Modules are delivered with each Forescout release. Upgrading the Forescout version or performing a clean installation installs this module automatically.

Additional Forescout Documentation

For information about other Forescout features and modules, refer to the following resources:

- [Documentation Downloads](#)
- [Documentation Portal](#)
- [Forescout Help Tools](#)

Documentation Downloads

Documentation downloads can be accessed from the [Technical Documentation Page](#), and one of two Forescout portals, depending on which licensing mode your deployment is using.

- **Per-Appliance Licensing Mode** – [Product Updates Portal](#)
- **Flexx Licensing Mode** – [Customer Support Portal](#)

 Software downloads are also available from these portals.

To identify your licensing mode:

- From the Console, select **Help > About Forescout**.

Technical Documentation Page

The Forescout Technical Documentation page provides a link to the searchable, web-based [Documentation Portal](#), as well as links to a wide range of Forescout technical documentation in PDF format.

To access the Technical Documentation page:

- Go to <https://www.forescout.com/company/technical-documentation/>

Product Updates Portal

The Product Updates Portal provides product and documentation downloads for Forescout platform releases, Base Modules, Content Modules, and eyeExtend modules. The portal also provides additional documentation.

To access the Product Updates Portal:

- Go to <https://updates.forescout.com/support/index.php?url=counteract> and select the version you want to discover.

Customer Support Portal

The Downloads page on the Forescout Customer Support Portal provides product and documentation downloads for Forescout platform releases, Base Modules, Content Modules, and eyeExtend modules. Software and related documentation only appear on the Downloads page if you have a license entitlement for the software.

To access documentation on the Customer Support Portal:

- Go to <https://Forescout.force.com/support/> and select **Downloads**.

Documentation Portal

The Forescout Documentation Portal is a searchable, web-based library containing information about Forescout tools, features, functionality, and integrations.

To access the Documentation Portal:

- Go to https://updates.forescout.com/support/files/counteract/docs_portal/

Forescout Help Tools

You can access individual documents, as well as the [Documentation Portal](#), directly from the Console.

Console Help Buttons

- Use context sensitive *Help* buttons to quickly access information about the tasks and topics you are working with in the Console.

Forescout Administration Guide

- Select **Administration Guide** from the **Help** menu.

Plugin Help Files

- After the plugin is installed, select **Tools > Options > Modules**, select the plugin, and then select **Help**.

Content Module, eyeSegment Module, and eyeExtend Module Help Files

- After the component is installed, select **Tools > Options > Modules**, select the component, and then select **Help**.

Documentation Portal

- Select **Documentation Portal** from the **Help** menu.