



# Fore Scout

## Core Extensions Module: Dashboard Plugin

### Configuration Guide

**Version 1.1.2**



## Contact Information

Forescout Technologies, Inc.

190 West Tasman Drive

San Jose, CA 95134 USA

<https://www.Forescout.com/support/>

Toll-Free (US): 1.866.377.8771

Tel (Intl): 1.408.213.3191

Support: 1.708.237.6591

## About the Documentation

- Refer to the Technical Documentation page on the Forescout website for additional documentation: <https://www.Forescout.com/company/technical-documentation/>
- Have feedback or questions? Write to us at [documentation@forescout.com](mailto:documentation@forescout.com)

## Legal Notice

© 2020 Forescout Technologies, Inc. All rights reserved. Forescout Technologies, Inc. is a Delaware corporation. A list of our trademarks and patents can be found at <https://www.Forescout.com/company/legal/intellectual-property-patents-trademarks>. Other brands, products, or service names may be trademarks or service marks of their respective owners.

2020-02-11 14:43

# Table of Contents

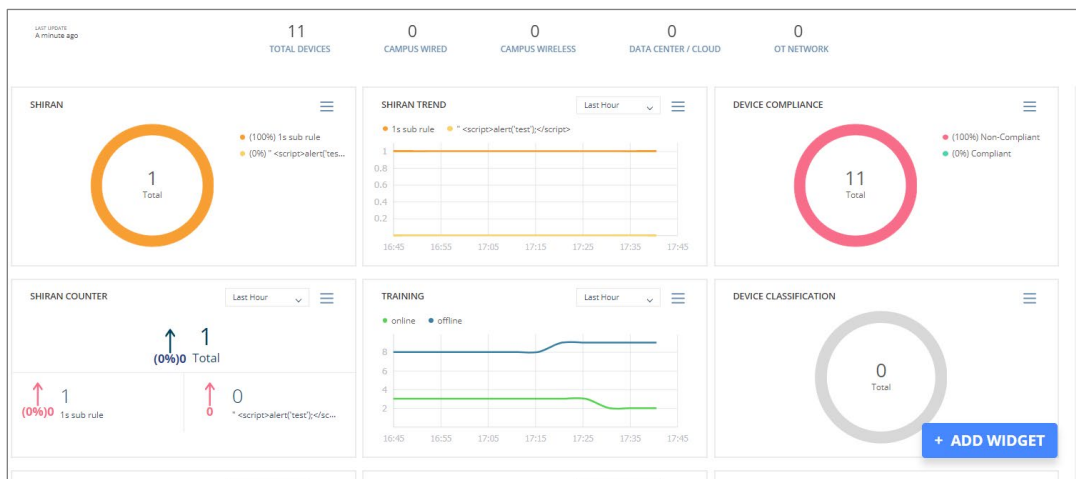
- About the Dashboard Plugin..... 4**
- Core Extensions Module Information ..... 4**
- Additional Forescout Documentation..... 5**
  - Documentation Downloads ..... **Error! Bookmark not defined.**
  - Documentation Portal ..... **Error! Bookmark not defined.**
  - Forescout Help Tools..... **Error! Bookmark not defined.**

## About the Dashboard Plugin

The Dashboard Plugin provides the Forescout Dashboard page.

The Dashboard is a web-based information center that provides an overview of the network and delivers dynamic at-a-glance information about:

- Device compliance
- Device classification
- Device management status



Users access the Dashboard in either one of the following ways:

- From within the Console
- From a web browser

By default, all Forescout users can access the Dashboard page. Forescout administrators have the capability to control user access to the Dashboard page, using either the Console or the command line interface.

For information about the Dashboard page, refer to the *Forescout Administration Guide*. See [Additional Forescout Documentation](#) for information on how to access the guide.

## Core Extensions Module Information

The Dashboard Plugin is installed with the Forescout Core Extensions Module.

The Forescout Core Extensions Module provides an extensive range of capabilities that enhance the core Forescout solution. These capabilities enhance detection, classification, reporting, troubleshooting, and more. The following components are installed with the Core Extensions Module:

Advanced Tools Plugin

DNS Enforce Plugin

NBT Scanner Plugin

CEF Plugin

DNS Query Extension Plugin

Packet Engine

DHCP Classifier Plugin	External Classifier Plugin	Reports Plugin
Dashboard Plugin	Flow Analyzer Plugin	Syslog Plugin
Device Classification Engine	Flow Collector	Technical Support Plugin
DNS Client Plugin	IOC Scanner Plugin	Web Client Plugin
	IoT Posture Assessment Engine	

The Core Extensions Module is a Forescout Base Module. Base Modules are delivered with each Forescout release. Upgrading the Forescout version or performing a clean installation installs this module automatically.

## Additional Forescout Documentation

For information about other Forescout features and modules, refer to the following resources:

- [Documentation Downloads](#)
- [Documentation Portal](#)
- [Forescout Help Tools](#)

### Documentation Downloads

Documentation downloads can be accessed from the [Forescout Resources Page](#), and one of two Forescout portals, depending on which licensing mode your deployment is using.

- **Per-Appliance Licensing Mode** – [Product Updates Portal](#)
- **Flexx Licensing Mode** – [Customer Portal](#)

 *Software downloads are also available from these portals.*

#### To identify your licensing mode:

- From the Console, select **Help > About Forescout**.

### Forescout Resources Page

The Forescout Resources page provides links to the full range of technical documentation.

#### To access the Forescout Resources page:

- Go to <https://www.Forescout.com/company/resources/>, select **Technical Documentation**, and search for documents.

### Product Updates Portal

The Product Updates Portal provides links to Forescout version releases, Base and Content Modules, and eyeExtend products, as well as related documentation. The portal also provides a variety of additional documentation.

**To access the Product Updates Portal:**

- Go to <https://updates.forescout.com/support/index.php?url=counteract> and select the version you want to discover.

**Customer Portal**

The Downloads page on the Forescout Customer Portal provides links to purchased Forescout version releases, Base and Content Modules, and eyeExtend products, as well as related documentation. Software and related documentation only appear on the Downloads page if you have a license entitlement for the software.

**To access documentation on the Forescout Customer Portal:**

- Go to <https://Forescout.force.com/support/> and select **Downloads**.

**Documentation Portal**

The Forescout Documentation Portal is a searchable, web-based library containing information about Forescout tools, features, functionality, and integrations.

**To access the Documentation Portal:**

- Go to [https://updates.forescout.com/support/files/counteract/docs\\_portal/](https://updates.forescout.com/support/files/counteract/docs_portal/)

**Forescout Help Tools**

Access information directly from the Console.

**Console Help Buttons**

Use context-sensitive *Help* buttons to access information about tasks and topics quickly.

**Forescout Administration Guide**

- Select **Forescout Help** from the **Help** menu.

**Plugin Help Files**

- After installing the plugin, select **Tools** > **Options** > **Modules**, select the plugin, and then select **Help**.

**Online Documentation**

- Select **Online Documentation** from the **Help** menu to access either the [Forescout Resources Page](#) (Flexx licensing) or the [Documentation Portal](#) (Per-Appliance licensing).